

Donna Corrigan, Broker



Long Park on the Gore



National Forest
480 acre
inholding off
Hwy 134 on
Forest Rd 225

\$995,000

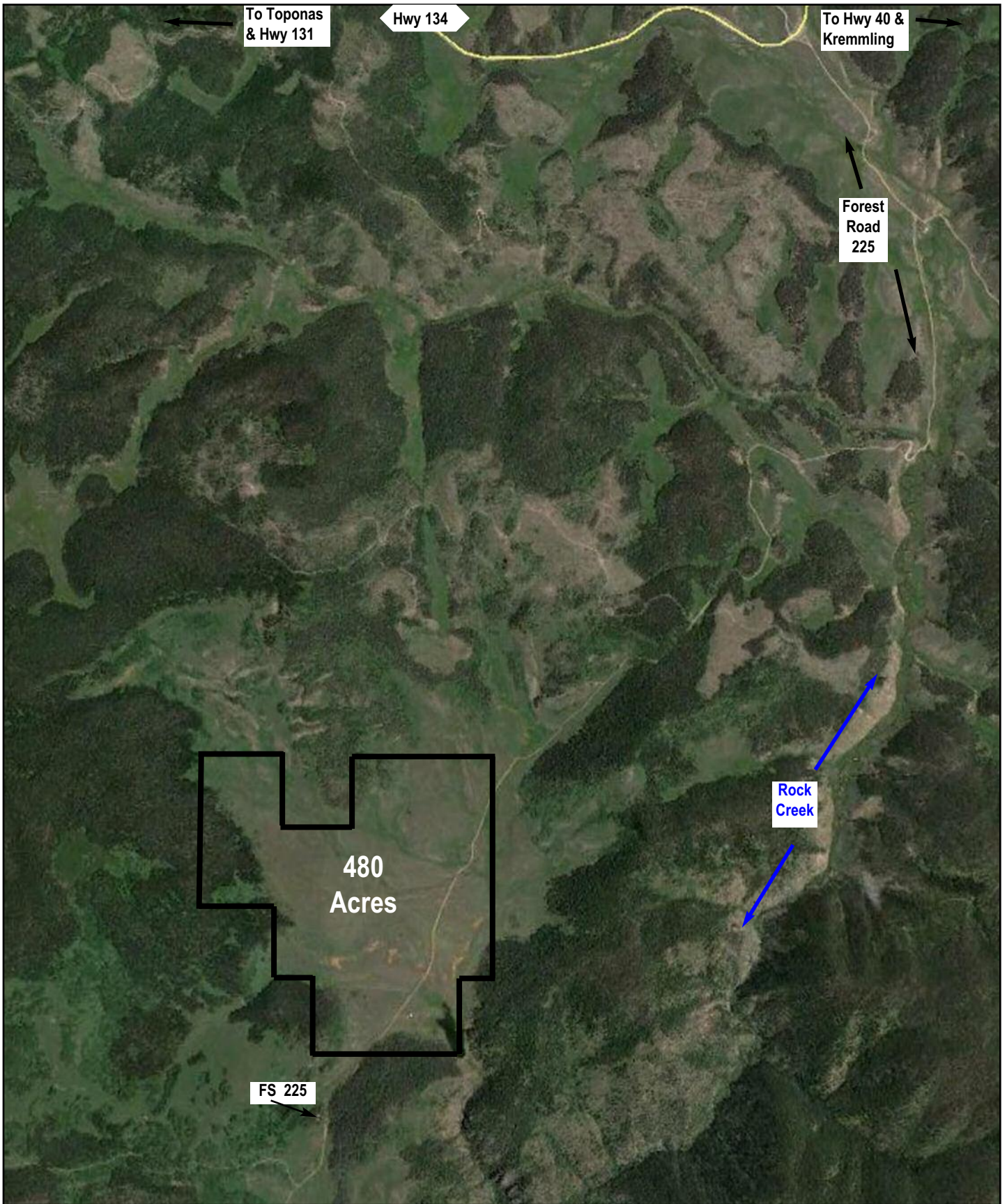


Private, secluded 480 acres located 5 miles off Gore Pass into Long Park. This serene acreage is totally surrounded by National Forest and is in a very desirable location for big game hunting. This is wildlife habitat at its best with creeks and a reservoir.

Purchase as a hunter's club getaway, snowmobiling club or group hideaway, sportsmen's retreat or adventure property. To keep your ag/forestry status for very low property tax, it can be leased for grazing. Picturesque historical cabin structure exists.

www.Colorado-Ranches.com

P.O. BOX 747 • 218 E. MAIN STREET • OAK CREEK, CO 80467 • (970) 736-8454



Land areas are approximate and subject to survey. Map is intended as a visual aid only; its accuracy is not guaranteed. Prospective purchasers should make their own independent inspections of the property to verify any and all facts and details to their satisfaction prior to making an offer.